



Easteel Energy Systems

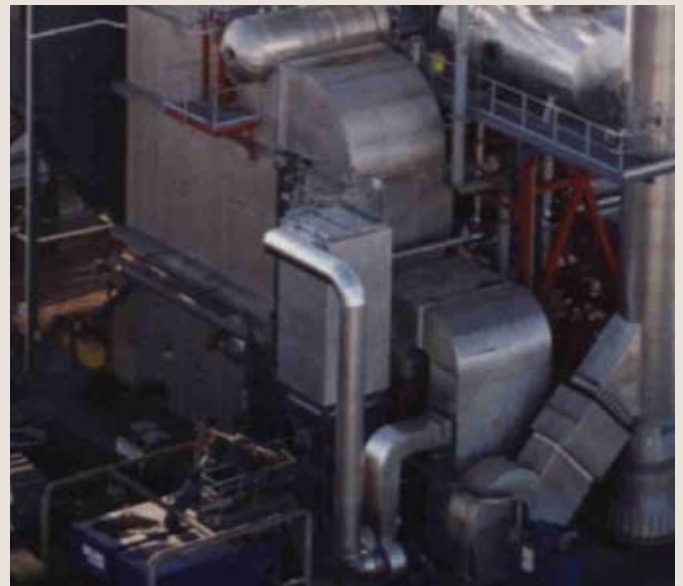
FONTERRA

CLANDEBOYE, NEW ZEALAND

PROJECT REVIEW 1

20MW Watertube Steam Boilers (2)
Babcock & Wilcox Towerpak with Detroit Rotograte Stoker
Coal Fired

Job Number: 8000
Date Installed: 1997



20MW Watertube Steam Boilers (2) Babcock & Wilcox Towerpak with Detroit Rotograte Stoker Coal Fired

Job Number: 8000
Date Installed: 1997

BACKGROUND OF PROJECT

As part of NZ Milk Products 1996 new spray dryer installation, RCR Easteel Energy Systems were engaged to provide the new high-pressure steam facility.

SPECIFICATIONS

- Thermal output 20MW
- Thermal efficiency 81 %
- Flue Gas Emission <250mg/Nm³
- Steam Drum Pressure 35.5 bar
- Steam Flow 30.46 t/h

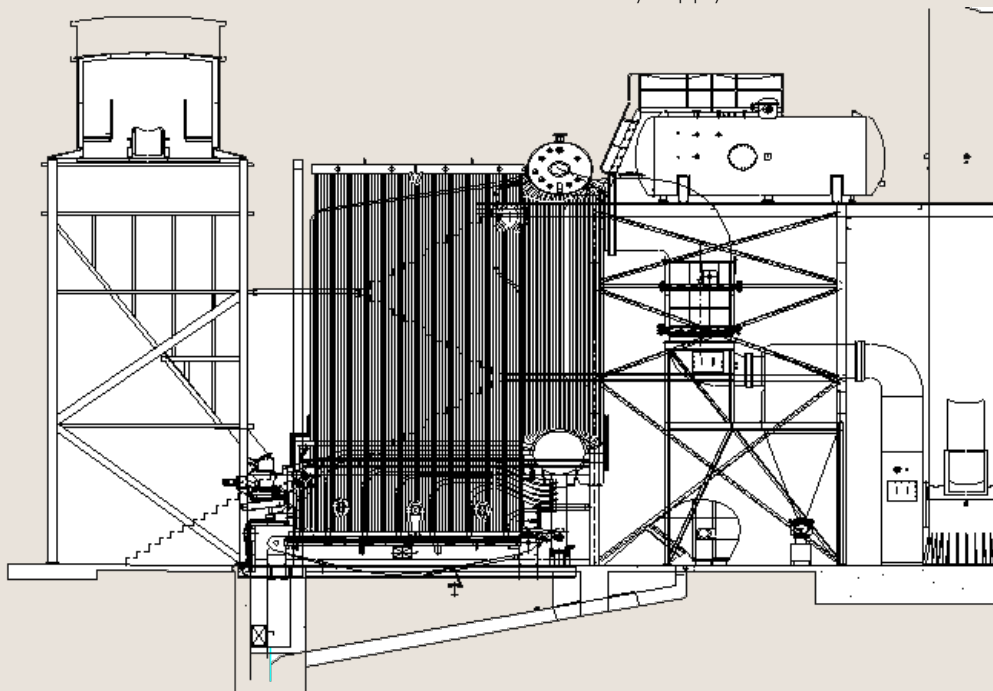
THE RCR EASTEEL SOLUTION

RCR Easteel Energy Systems designed, manufactured, installed and commissioned a limited attendance, coal fired steam plant that included;

- Complete project management
- Civil design and construction
- 2 x 20MW Babcock and Wilcox Towerpak boilers
- Pressurised deaerator
- Detroit RotoGrate
- Brightwater fuel handling system
- Goretex Superflex fractionating bag filters

WHY CHOOSE RCR EASTEEL?

- Limited attendance boiler
- Ability to burn high fines coal
- Project managed, turnkey
- Turnkey supply



NEW ZEALAND

960 Omahu Road
Hastings NZ 4201
Tel: +64 6 873 7055
Fax: +64 6 870 7005
Email: sales@easteel.co.nz

AUSTRALIA

273 Boundary Road
Braeside VIC 3195
Tel: +61 3 9586 5777
Fax: +61 3 9580 9820
Email: easteel@easteel.com.au